



Sarvodaya Shikshan Mandal's  
**SUSHILABAI RAMCHANDRARAO MAMIDWAR  
COLLEGE OF SOCIAL WORK, CHANDRAPUR**

(Affiliated to Gondwana University, Gadchiroli, Maharashtra, India)

Re-Accredited by NAAC 'B' Grade  
171<sup>st</sup> Ranking by NIRF(2020)

# PROSPECTUS

## 2021 - 2022



His excellency, Governor of Maharashtra and Chancellor Hon'ble Bhagatsingh Koshiyari, NAAC Director Prof. S.C. Sharma and Dean, Faculty of Interdisciplinary Studies Dr. S. M. Sakure seen in the Gondwana University Gadchiroli's 8th online Degree Convocation Program



Principal Dr. S. M. Sakure and Dr. S.R. Girde receiving the Best NSS College Unit University level award by the hands of acting VC Prof. Shrinivasa Varkhedi

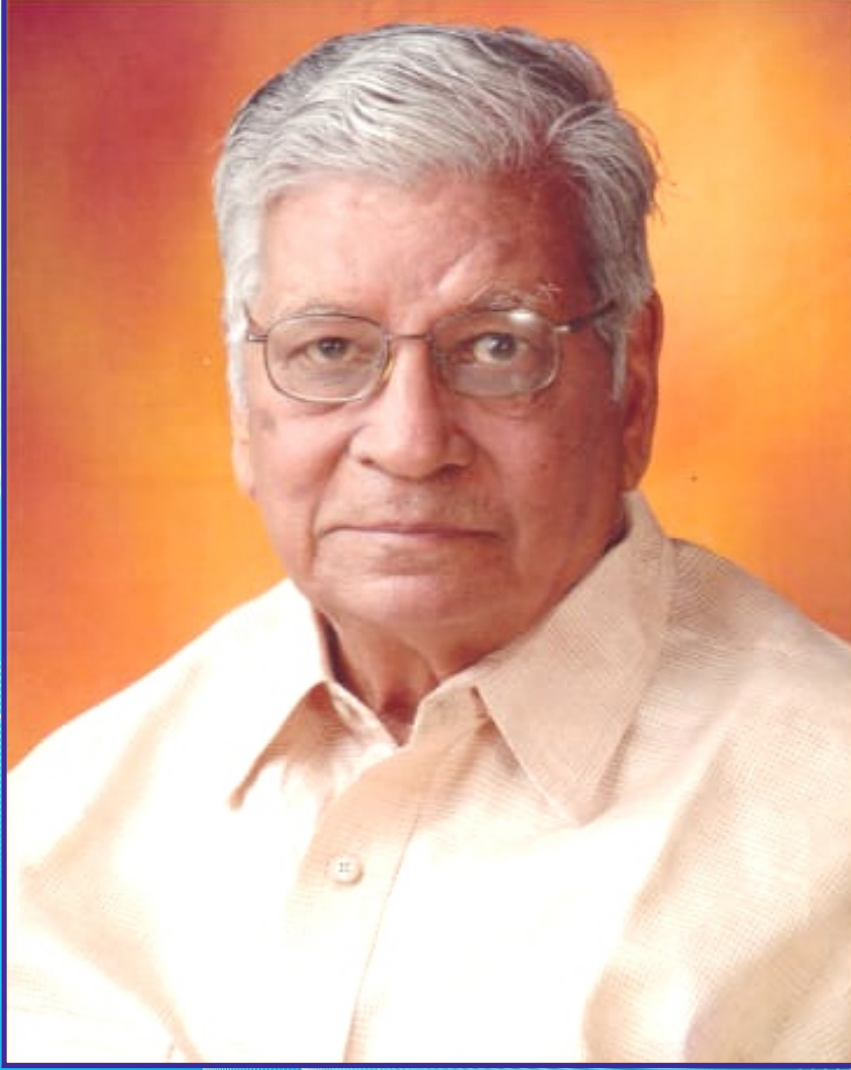
Hon'ble Guardian Minister Vijay Wadettiwar, Collector Dr. Kunal Khemnar, the Principal Dr. S. M. Sakure regarding Commencement of Telephonic Counseling centre by the college during Covid-19



Principal Dr. S. M. Sakure inaugurating the Mega Blood Donation Camp and Essay competition on account of Death Anniversary of late Shri. Shantaramji Potdukhe and NSS Foundation Day. Ex. MLA Shri Wamanrao Chatap Addressing the Blood Donation Camp and Tree Plantation Program



## आमचे श्रध्देय



स्व. श्री. शांतारामजी पोटदुखे

संस्थापक अध्यक्ष

सर्वोदय शिक्षण मंडळ, चंद्रपूर

अजात शत्रू म्हणूनी, गौरवितात सारे । सर्वास आपला तू, विझती जिथे निखारे ॥

## From Principal's Desk



The department of **Social Work in Sarvodaya Shikshan Mandal's Sardar Patel College commenced in 1988**. Earlier the department started with only Under- Graduate Program but since 1992 Post-Graduate Program was also commenced.

**Professional Social Work** education in India has become a challenge and a highly scientific discipline due to the ever increasing problems and the developmental needs of a nation. Based on sound theoretical knowledge, well developed techniques and skills, the training aims at the formation of committed and expert professionals in the field of Social Work. **In 2007** the college was shifted to a new building at the sprawling premises of 5 acres

on the outskirts of city.

Being the reigning Principal, I was felicitated with '**Adarsh Shikshak Puraskar**' by the Govt. of Maharashtra back in 2012-13. To recognize the philanthropic work, the **Govt. of Maharashtra felicitated the Sarvodaya Shikshan Mandal in 2000-2001** by conferring the '**Adarsh Shikshan Sanstha Award**'.

The college is affiliated to **Gondwana University, Gadchiroli** since its inception from 2012 and also affiliated to **UGC, New Delhi under 2(F) & 12(B)**. The college has also been recognized by the University as a **Center for Higher Learning and Research**. 5 student's Awarded Ph.D. Degree in research center. Every year the outgoing students of PG are deputed for Block Placement and in doing so they get the opportunity of permanent employment in that particular NGO. Similarly college conducts Campus Interview in collaboration with various GO's, NGO's and industries for job placement of students. I am happy that many of our students are working in these organizations. It's a matter of great pride and honour for our college that we have achieved (171st rank) in the top 200 colleges in India in the National Institutional Ranking Framework (NIRF) list of 2020. It was because of the industrious nature of the Executive Body of Sarvodaya Shikshan Mandal alongwith highly qualified Teaching Faculties and Non-Teaching Staff. **In 2019-20**, Gondwana University felicitated the **NSS unit** of our college as the best **NSS wing** and the best Program Officer (**Dr.S.R.Girde**). It's a matter of great pride for us that many of our students have represented at the State and National level competitions.

The Coronavirus pandemic has disrupted life for communities. In this testing times, the staff and students of our college have reached out to the communities by freely supplying masks, grains, sanitizers and all the related items. In rural areas students on their own conducted **Blood- Donation Camps**. Their selfless service assisted the rural masses in getting employment under Government's Employment Guarantee Scheme and guided school children for effective management of stress. Our efforts have been recognized by the office of Vice- Chancellor Gondwana University, Chief Minister's office along with Sports Ministry of Central government as well as the office of Hon'ble Prime Minister of India.

This temple of learning trains each student to set a goal for one's own future life and then motivate them to dream higher to achieve it with the strong support of exemplary discipline and excellent academics. Finally I would like to conclude by quoting the maxim:

With lots of love

" we're not in it ( Social ork Profession) for the income; we're in it for the outcome".

**DR. SUNIL SAKURE**  
PRINCIPAL



SARVODAYA SHIKSHAN MANDAL'S  
**SUSHILABAI RAMCHANDRARAO MAMIDWAR  
COLLEGE OF SOCIAL WORK,  
CHANDRAPUR**

(Affiliated to Gondwana University, Gadchiroli, Maharashtra, India)

Re-Accredited by NAAC 'B' Grade  
171<sup>st</sup> National Institutional Ranking Framework  
(NIRF- undertaking by MHRD)

---

---

# **PROSPECTUS**

## **2021- 2022**

---

---

**BSW I Sem. to VI Sem.  
MSW I Sem. to IV Sem.**

Web Site : [www.srmcollege.ac.in](http://www.srmcollege.ac.in)

You Tube: [social work collge chandrapur](#)

E-mail : [spcsw1988@yahoo.co.in](mailto:spcsw1988@yahoo.co.in)  
[srmcollege1988@gmail.com](mailto:srmcollege1988@gmail.com)

Facebook : [srmcsw-library chandrapur](#)

Contact : +91 7666948587

## *The Mission Statement*

*Sushilabai Ramchandrarao Mamidwar College of social works is committed to impart moral, social Cultural and professional healthy education to the students, at Under Graduate and Post-Graduate level.*

*It also ensures and inculcates perfect discipline with regard to regularity, sincerity and punctuality among the students and teachers. The mission of the college is also the persuance of knowledge through life long learning in academies and extra curricular activities.*



राष्ट्रीय मूल्यांकन एवं प्रत्यायन परिषद  
विश्वविद्यालय अनुदान आयोग का स्वायत्त संस्थान  
**NATIONAL ASSESSMENT AND ACCREDITATION COUNCIL**  
An Autonomous Institution of the University Grants Commission

## *Certificate of Accreditation*

*The Executive Committee of the  
National Assessment and Accreditation Council  
on the recommendation of the duly appointed  
Peer Team is pleased to declare the  
Sarvodaya Shikshan Mandal's  
Sushilabai Ramchandrarao Mamidwar College of Social Work  
Padoli, Dist Chandrapur, affiliated to Gondwana University,  
Maharashtra as  
Accredited  
with *CSPA* of 2.42 on seven point scale  
at B grade  
valid up to August 15, 2023*

*Date : August 16, 2018*



*Director*



## ✧ **OBJECTIVES OF THE COLLEGE** ✧

1. To initiate professional social work Education in Tribal area.
2. To impart professional social work Education at graduation and post graduation levels.
3. To provide affordable professional Education focussing on quality of opportunity to all section of society.
4. To promote employment/self-employment opportunities for the students by imparting education in various job oriented Fields of Social Work at post graduate level
5. To cultivate value based professional outlook by inculcating appropriate knowledge, skills, attitude and aptitude in trainees.
6. To provide the trainees an opportunity to learn to serve the community through various extension activities undertaken by the college, such as N.S.S., Population Education women Study and semesters cell, Child Guidance Center, Community awareness and developmental programmes. etc.
7. To promote awareness among the Urban, Rural & Tribal people about their rights & obligations.
8. To imbibe Human Relations approach among the Social Work Trainees.
9. To extend professional expertise to the society through Research, Consultancy, and Training

## ✧ Social Work Programmes ✧

### A) BACHELOR OF SOCIAL WORK (BSW):

#### Six Semester Programme.

candidates who have passed certificate course in social work (CSW), Higher Secondary School Certificate Examination (HSSC) pre-University/Pre-Degree or equivalent examination from a recognised Board/University are eligible for BSW course.

### B) MASTER OF SOCIAL WORK (MSW):

#### Four Semester Programme.

Candidates who have passed Bachelor's Degree examination in the discipline of social work, Arts, Science, Engineering, Commerce Pharmacy, Architecture, Home-Science, Law etc. are eligible for admission to MSW course.

Application to the above courses shall be made in the prescribed form. The form can be obtained from the college office on all working days from 9.00 a.m. to 4 p.m. The filled in forms with all the enclosures should reach the college office within the stipulated time. Forms delayed or incomplete will not be entertained under any pretext thereafter

### C) Ph.D Programme :

The college is approved to run a centre for Higher Learning and Research (HLR) by the Gondwana University Gadchiroli. A student who has cleared the PET exam for Ph.D being conducted by the Gondwana University in the subject of Social Work is admitted to this programme. The admission is subjected to the rules and regulations of the university and college.

#### ADMISSION PROCEDURE:

### A) BACHELOR'S DEGREE (BSW - I Semester)

The list of the eligible candidates on merit basis will be displayed on the college website. The eligible candidates shall be called upon for personal interview before the Admission Committee on specified date and time.

The purpose is to know the personality of candidate and his/her

interest and aptitude for social work curriculum. The candidate must produce all the documents in original before the Admission Committee at the time of admission.

**B) MASTER'S DEGREE (MSW - I Semester)**

The eligible candidates shall be called upon for a written test, Group Discussion and personal interview before the selection committee on specified date and time. Written test is based upon General Knowledge, General Aptitude & Logical reasoning. The candidates shall produce all the relevant documents in original at the time of interview. Migrants from other universities are required to produce Migration and Eligibility certificates.

The purpose of written test, Group Discussion, and personal interview is to know the personality of candidate and his/her interest and aptitude for social work curriculum. The candidates must produce all the documents in original before the selection committee for verification.

However the candidates must know that the final list will be displayed on the next day after the entrance exam. Similarly a waiting list will also be displayed.

If the selected candidates could not seek admission within the stipulated date, the candidates on the waiting list shall be given the preference.



## ✧ Highlights Of The College ✧

### 1) Hostel :

Boys & Girls Hostel Facility is available with the college. Atleast 35 students can be accommodated (Boy's - 15 Student & Girls - 20 Students)

### 2) Computer Department:

Computer literacy is the need of the hour Therefore a trained social worker must have a knowledge of computer keeping this view in mind a well-furnished computer-lab with internet facility is available in the college.

### 3) Library and a Reading Room.

Library of the college is enriched with more than 5500 books of Social work, Psychology. English and Marathi For the benefit of students, a 'Book-Bank' Scheme' is started. similarly, local dailies and Journals have also been subscribed by the library. An in-built separate reading room has been made available to the students.

### 4) Big Play-Ground

A Social-worker need to be remain Fit. Hence a big play-Ground has been prepared within the premises for the students.

### 5) Cycle Stand

There is a seperate cycle and scooter stand available in the college. No due is levied upon the students. However, the students must park their vehicles on their own responsibilities. college would not be held responsible for any sort of liability in this matter

### 6) Art Gallery

To exhibit the hidden artistic and writing skills of the students, an Art gallery has been started. Through this students get to know the qualities of their co-companions.

### **7) College Magazine**

Each year a college magazine called, 'SAMAJ DARPAN' is published. It includes Articles, Poems, Stories and Essays in Marathi, Hindi and English languages written by the students. Similarly the Reports of Various departments are also published in the magazine. Students must submit their articles before the concerned Professors anyhow upto 10th January.

### **8) Sports And Cultural Gathering .**

To exhibit the artistic and sporty elements in the students a sports and cultural festival is organised every year in the last week of December. The successful students are showered with prizes at the end of the festival.

### **9) Social Justice Cell .**

For the effective handling of the problems and Injustice meted out to the S.C., S.T , N.T & V.J. Students and for their overall development a Social Justice Cell has been set-up in the college.

### **10) Cell Against Sexual Harassment Of Women At Work Place Internal Complaint Committee:**

As per the ordinance No. 4/2007, a Grievance Redressal Cell has been constituted for the Grievances of the Sexual harassment of the women's employees and girls students of the educational institute.

### **11) Anti Ragging Cell**

In Pursuance of the UGC directions, the higher educational institution are banded for regulation on curbing the menace of ragging in higher educational institutions (2009), the college formed the cell.

### **12) Right to Information**

As per the RTI Act, Govt. of Maharashtra, the Principal is nominated as the Information Officer and Assistant Commissioner, Dept. of Social Welfare, Chandrapur as the Appellant Officer

### **Activities carried out under the direction of Gondwana University**

#### **1) National Service Scheme (N.S.S)**

To be in tune with the community life of rural part, and hence to imbibe the spirit of Nationalism among the Students, a NSS wing has been started in the college. Each year the N.S.S. Conducts the rural camps

taking into consideration the rural health Education, cleanliness, forest-protection, water-conservation, Environment etc. Students seeking admission to N.S.S. are awarded 10 additional marks by the University.

**2) Under The Dept, Of Continuation Adult Education And Extension**

**A) Women study and service centre.**

- i) To effectively solve the problems of women through available resources a women study and service centre has been set up in the college.
- ii) Students enrolled under the activity are awarded 10 additional marks by the university.

**Support Services**

**1) Sahyogi Competitive Examination And Career Guidance Cell**

For the overall development of students and to create the opportunities of employment for them, the college runs a competitive examination and a career Guidance cell

**2) Sahyogi Job Placement Cell**

The cell conducts P.R.A. workshop, personality development programmes, summer placement in NGO'S, campus interviews & Referral Services for the students, besides informing them of employment opportunities.

**3) Sahyogi Students Welfare Club**

Through this club an educational movement for the personality development of students is implemented It conducts competitive coaching classes for the students. It also inculcates among students the skills of facing interviews and creating self, employment etc. Fees Per student is 25 Rs. yearly.

**4) Sahyogi Natural Disaster Calamity Fund**

To face the Natural disaster the college has formulated a natural disaster calamity fund with the minimum monthly collection from teaching and non-teaching staff This is an innovative concepts formulated in tune with the social responsibility.



#### **5) Village Adopted by College**

As a step towards Social commitment the College has adopted village Ajaypur For Five Years From the session 2019-20 for Bridging a gap between the Villagers and Various Governmental Schemes.

#### **Code Of Conduct For Students**

- 1) Student should not break the discipline in and outside the college premises.
- 2) Each student must remain present for the programmes of national festivals like Independent-Day & Republic Day. Apart from this, He/She must remain present for the programmes organised in college. strict actions will be initiated against the absentees.
- 3) Standing in the corridors is strictly prohibited while classes are being engaged.
- 4) Student must carefully fill the application form in his own handwriting The information regarding educational concession once provided by the students shall be binding upon him/her and if any educational concession cancelled, by the government, He/She shall have to submit the fees according to the rules framed by the University.
- 5) Student must enter the class before the lecturer He/She should not leave the class room before the lecturer's exit.
- 6) Fees or fine incurred must be submitted to the college immediately. To redress any difficulty student must see the principal
- 7) If any controversy arises in the college the final decision will rest with the principal.
- 8) Students must approve the facilities available in the college at the time of admission. Thereafter, there would be no scope for additional demands of facilities
- 9) As per the guidelines provided by the University, the theory, field work and research attendance will be maintained separately and regularity in each is essential

- 10) Students must not chew tobacco, cigratte etc. in side the college premises, These things are strictly prohibited in the college.
- 11) Students must abide strictly by the discipline of the college. He/She will be liable to be resticated from the college if found misbehaving recklessly.
- 12) Student must intimate the college if his/her or parents address is changed
- 13) Students must ensure all the facilities at the time of admission once admitted no demand will be entertained either personalty or through stir for any additional facility.
- 14) Liability for getting scholarship and concession solely depends upon the student. Hence the responsibility of submitting applications and relevant documents entirely rest with the students and their parents.
- 15) Once the T.C. is issued to the student, No duplicate T.C. will be issued within six months under any circumstances. Thereafter, duplicate T.C. will be issued only after the payment of Rs. 250/- depending upon the assurance of Principal regarding the loss/theft/destroy/ of earlier original T.C.
- 16) Student must keep Identity card obtained from the college.
- 17) Student must not engage himself in any Non-Acadic and Violent Activity inside the college premises.
- 18) The right to cancellation of Admission or punishment reserves with the principal in the following matters.
  - i) If a student is unable to pay college dues
  - ii) Lacking in educational development and shortage of attendance.
  - iii) Improper behaviour of the student
  - iv) Found violating the rules and discipline of the college.
- 19) According to the letter No. F1-8/2006 (C.PP.II) dt. 04/03/2008 of University Grants Commision, Delhi, if a student found guilty of involving

in the Ragging in and outside the college premises or any complaint lodged in this regard, the college management will sternly act against such miscreants leading to the cancellation of admission.

20) **IDENTITY CARD**

Student will be issued an identity card soon after his admission. He/She must keep this card carefully. Library facilities or sports materials will be made available only after showing the I-card. If lost, a new Identity card shall be available only after the payment of Rs.25. It is the sole responsibility of the student to get his I-Card stamped with the signature of principal within 15 days of the admission. A fee of Rs. 25 will be imposed if a student does not prepare his I-card upto September & after the month of November a fee of Rs. 100 will be imposed upon the student.

21) Keeping mobile phone by students in the class room is strictly prohibited. A fine of Rs. 100 will be imposed if found violating the rule.

22) **Misbehavior**

Any type of Misbehavior by students either inside the college premises or outside (Field Work, Camp, Exposure Visit, etc.) that causes disreputation to the institute; the principal has the right to debar or take any appropriate legal action against such students.



**A) GONDWANA UNIVERSITY ORDINANCE NO. 2**

If any student found guilty of grave mis-conduct or persuading the same conduct, the principal will intimate his/her parents and depending upon the seriousness of mis-conduct, his/her admission would be cancelled and would also be not allowed to appear for university examinations. In this regard the principal's decision will be final.

**B) CLAUSE NO. 2**

If the student's admission is cancelled / terminated or is not allowed to appear for the University examinations in the said context & if he/she has to secure admission in another college, he/she will have to seek permission of the earlier principal (who has suspended his/her admission).

If the student hides the fact of his termination / Restiction / Cancel ation of admission he /she will have to face the disciplinary action before the executive committee.

**RULES REGARDING ADMISSION**

Following documents are necessary along with the application form.

- 1) Two true copies with original of school or college leaving certificate (T.C.) and mark list of last exam.
- 2) For external students, an application form must accompany the original provisional certificate form the university or Board & the mark list of the last qualifying exam.
- 3) Application form must accompany two passport size photograph along with the name written on the back side.
- 4) Application form must accompany the two true copies of migration certificate for those who comes from outside the Nagpur University or Nagpur Board.
- 5) Those students who have passed earlier examination apart form Gondwana University or Nagpur Board, should submit the

eligibility certificate obtained from Gondwana university.

The eligibility certificate must be submitted to their Gondwana University before 30th August, therefore student must submit the same upto 14 Aug. at college Thereafter a fine (late fee) of Rs. 50/- per month will be incurred upon the student by the university from such sutudents (not sumitting the eligibility certificate.) The admission will be considerd as provisional. He/she will have to pay the fine of Rs. 50/- month to the college. The students will have to pay the fee as per the rates decided by the university.

- 6) No student will be allowed to attend the classes unless admitted.
- 7) Admitted student must submit the fees noted in the prospectus immediately If he/she willingly cancels admission no fees would be refunded under any circumstances.
- 8) Student must carefully choose the class to which he wants admission. Responsibility solely lies upon him/her for seeking admission to wrong class. If he/she found ineligible for admission, no fees would be refunded, at any cost.
- 9) Documents submitted along with the application forms will be returned after a fortnight, to those who are not admitted in the college If admitted the fees would not be refunded
- 10) Student must carefully keep the receipts of concession forms, fees, university exam form, fines and certificates obtained form the college failing to which, a student will have to submit a search fees i.e. Rs.50/- to find the record. similarly Rs.50/- fees for getting E.B.C. Certificate number & scholarship sanctioned number will have to be submitted
- 11) Student will have to submit the fees for a complete session even if he cancels his admission in the midst of a session, except for those whose parents are in Govt. Service and are transferred

- 12) For getting financial aid, scholarships etc. A student must fill in the application in proper format within the stipulated time. Application received after the stipulated date or lacking the proper documents can lead to the cancellation of said schemes and if it happens a student must have to concede the complete fees.
- 13) A fine of Rs.50/- per students will be charged in case of break up of furnitures.
- 14) According to the circular of the dept of higher & technical education, Govt. of Maharashtra, 30% Seats are reserved for women students.

**SPECIAL NOTE :**

- 1) Students seeking admission to BSW - I to VI Sem. & MSW I to IV Sem. shall be affiliated to Gondwana University & their assessment will be carried out as per the Credit Grade Semester System.
- 2) College has put up a new dress-code for students. He/She must observe the dress -code in the premises, other wise a fine of Rs. 50/- per day will be charged
- 3) The college timing is from 9.00 a.m. to 4 p.m Student must enter college any how upto 9.00 a.m. let comers will not be entertained
- 4) All the students of BSW must submit the University machine cards upto 15 september
- 5) Students must submit the university Examination form anyhow before the dates declared by the university.
- 6) All the concessional & scholarship forms must be submitted to college upto 20th August college will not be responsible for the forms received thereafter.
- 7) Admissions will be closed after the last date declared by the university.

**REGARDING ADMISSIONS**

- 1) Student must fill the application form for admission through online/offline mode. Students are advise to download the prospectus from the college website. Hard copy of prospectus will not be available in the college. Application must accompany relevant documents.

- 2) The Registration fees for BSW is Rs. 150/- & MSW is Rs. 200/-
- 3) The merit list for admission shall be displayed on the college website. Those selected must sought admission within five days. student must submit the complete fees at the time of admission.
- 4) Student along with Parents must remain present at the time of their wards admission They are requested to sign the agreement at the time of admission.
- 5) The last date of admission will be declared by the University. If there are no vacant seats, college reserves the right of closing the admission even before the last date declared by the University.
- 6) It is mandatory for the MSW-I Semester students of this college to seek admission in MSW-II Semester in this college.
- 7) Student must submit the fees for village camp and study tour at the time of admission.
- 8) The college will maintain the record of the student for blood donation at the General Hospital, Chandrapur on account of his birthday.

#### **ATTENDANCE**

- 1) Student must remain present for every lecture. minimum 75% attendance is compulsory failing which, student shall not be allowed to appear for the university examination similarly his/her Govt. scholarship will not be sanctioned.
- 2) Student remain absent without proper permission shall be charged Rs. 25/- per class.
- 3) If a student remain absent continuously for a period of one month without the prior permission of the principal his/her admission shall be cancelled. Such students will have to apply for re-admission after paying the full fees.
- 4) For final admission Student will have to mandatorily remain present in the college. He/She must bring all the original documents at the time of admission.



## **COLLEGE EXAMINATION ·**

**Each Semester Two Unit Test and one Model Exam. Shall be held in the college. Students will have to Compulsorily attend these exams. Rs. 25/- per paper shall be charged for the student who remain absent for Unit tests.**

**Minimum 35% marks per paper in the Model test exam is compulsory. Those securing less shall be charged Rs. 25/- per paper and the absent students shall be charged Rs. 50 per paper.**

Student will be issued the Hall-Tickets of University exam only after paying the fine of the said exams. This is the tentative schedule. However, Final schedule will be prepared soon after the guidelines issued by the Gondwana University.

## **PHYSICAL FITNESS TEST**

A physical fitness test for the student (Girls & Boys) of BSW Sem. to VI will be held in the last week of December The absent students will be charged Rs. 100/-

## **STUDENT COUNCIL :**

The college's student council shall be constituted as per the Gondwana university's ordinance No. 4 & No 5 (1996) under the Maharashtra public universities at 2016 Section 99 (2). The council will be effective upto 30th April of the current session. Further information regarding this will be displayed on the Notice board.

## **MIGRATION CERTIFICATE .**

The students from the other un iversity should produce migration and Eligibility certificates. The migrant should submit the fees for migration certificate as incurred by the Gondwana University. The migration certificate should be submitted to the college anyhow before 15th August.

## **EDUCATIONAL CONCESSION AND SCHOLARSHIPS**

Given below is the list of concession & scholarships. Student can be availed only one concession or scholarship at a time.

- I) Govt. of India's National Scholarship
- II) Govt. of India's National Loan Scholarship Scheme.
- II) Dr. Babasaheb Sawadhar Yojana for SC Students.
- IV) Freedom fighter scholarship, Fee concession etc.
- V) Dindayal Upadhyay Yojana for S.T
- VI) Serviceman fee concession
- VII) Handicap Scholarship
- VIII) Minority Scholarship
- IX) Vidya Vetan Scheme for S.C.,S.T, N.T., S.B.C., etc.
- X) As per the G. R. any type of Govt. Scholarship shall be obtained through the Nationalised Bank only. Hence students are required to open their account in Naionalised Bank and furnish the pass book number in the Application form for Admission as well as in the application forms for schorships, otherwise scholarship would not be granted Student will be solely responsible for this. Collge will not be held responsible in this regard

#### **STUDENT AID FUND**

Apart from the aforesaid facilities, students keeping good academic record throughout the year will be assisted in the college fees, Books etc. In this regard student should apply to the principal before 31st January. Students benefitted with Scholarship or concession shall not apply.

### **AWARDS .**

- 1) Late Sumtibai Ramchandrarao Tarkunde Gold Medal from Shri Manoharrao Tarkunde for MSW University Topper.
- 2) Late Shri Ramchandrarao Mamidwar Gold Medal from Mamidwar Family for the BSW University Merit.
- 3) Late Smt. Anuradha Sudhakar Rao Mamidwar Memorial Award of Rs. 1001/- to the BSW College Topper from Shri Sudhakar Rao R. Mamidwar
- 4) Late Sudhatai Sakure award of Rs. 1001/- from Principal Dr S.M Sakure to the BSW college Topper
- 5) Late Shri Bhanudas Pant Khedkar Memorial Award of Rs. 501/- from Prof Arun Khedkar in the subject "Organise Labour welfare" (OLW) to the Toppers from MSW II year
- 6) Late Smt. Shantabai Khedkar Memorial Award of Rs 501/- of M.S.W - 1 Topper in 'Sociology for social work.'
- 7) Late Shri Tukaramji Kapse Memorial Award of Rs. 1001/- from Dr Jayshri Kapse (Gawande) to the Topper from MSW Degree (Girls)
- 8) Late Shri Fr Augustin Bellarman Memorial Award of Rs. 501/- from Prof Dr. P.M. Borkar to the Topper in 'Psychology' in MSWI.
- 9) Late Dr Dinesh Rao M. Narkhedkar Memorial Award of 500/- from Prof. Dr. Pragati D. Narkhedkar to the Topper girl from MSW.
- 10) Late Mandakini Bhaskarrao Jadhao Memorial Award of Rs. 1001/- from Prof Dr Mamata Thakurwar to the Topper in M.S.W Degree (for Boys)
- 11) Late Smt. Kamal Ramteke & Rambhau Ramteke Memorial Award of Rs. 1001/- from Prof Nitin Ramteke to the B.S.W. College Topper (Girls)

- 12) Late Shri Nathobaji U Borkute Memorial Award of Rs. 501/- from Prof. Dr.Devendra Borkute to the M.S.W.-I Topper
- 13) Late Shri Mahadeorao Kawade Memorial Award of Rs. 1001/- from Prof. Dr. kalpana Kawade to the Topper in the B.S.W Degree (S.C. Catagory Girls)
- 14) Rs. 501/- Prize by the Alumni Association to the BSW Topper.
- 15) Rs. 1001/- prize by the Alumni Association to the M.S.W Topper

---

**GONDWANA UNIVERSITY, GADCHIROLI**  
**CENTRE FOR HIGHER LEARNING AND RESEARCH**

University has offered a Centre for Higher Learning Research (CHLR) to Sushilabai Ramchandrarao Mamidwar College of Social Work. Students pursuing Ph D in social work faculty will have to apply for Registration at the centre.

The Students registered as Ph D Scholars in this University, in accordance with the provisions of governing Direction/Ordanance shall be required to successfully complete their Course Work, as has been made mandatory by the University Grant Commission vide its Clause No. 13 of UGC Regulations, 2009, published in the Gazette of India, dated 11th July, 2009. The Course Work shall be called as "Ph D " Course Work'(PCW).

As per governing provisions, no candidate shall be allowed to submit his/her thesis without PCW Completion Certificate and Consolidated Memo of Marks (CMM) by this University.



## College Fees Session 2021-2022 According to University

		B. S. W. I, II, & III	M. S. W. I, II
1)	Registration Fees	Rs. 150/-	Rs. 200/-
2)	Admission Fees	Rs. 25/-	Rs. 50/-
3)	Identity Card	Rs. 25/-	Rs. 25/-
4)	Library Ticket	Rs. 05/-	Rs. 05/-
5)	Reading Room	Rs. 05/-	Rs. 05/-
6)	Education Fees	Rs. 800/-	Rs. 1000/-
7)	Samajdarpan Annual Fees	Rs. 100/-	Rs. 100/-
8)	Library Fees	Rs. 100/-	Rs. 100/-
9)	Play and Gymanisum	Rs. 120/-	Rs. 120/-
10)	College Exam Fees	Rs. 50/-	Rs. 50/-
11)	Medical Test Fees	Rs. 20/-	Rs. 20/-
12)	Physical Fitness Test	Rs. 20/-	Rs. 20/-
13)	Others Fees	Rs. ./-	Rs. ./-
14)	Students Aid Fund	Rs. 30/-	Rs. 30/-
15)	Field Work Book	Rs. 300/-	Rs. 300/-
16)	Dissertation Fees	Rs. .../-	Rs. 206/-
17)	Training Fees	Rs. 10/-	Rs. 10/-
18)	College E-Suvidha fee	Rs. 200/-	Rs. 200/-
19)	Extra Curricular Activity	Rs. 40/-	Rs. 40/-
20)	Environment Study Fees ( For BSW- II Year )	Rs. 150/-	-----
21)	Students Welfare Fund	Rs. 25/-	Rs. 25/-

**Note** Students of BSW - IV Sem & MSW - II Sem. should submit the additional fees for village camp. BSW - VI Sem., MSW IV Sem. Students should submit the additional Fees for Exposure visit. The fees must be deposited at the time of admission

\* Student to pay Fees through RTGS / NEFT \*

Principal, Sushilabai Ramchandraro Mamidwar College of Social Work  
A/c No. : 60099580318 IFSC Code: MAHB0000799 Bank of Maharashtra, Padoli, Chandrapur.

## University Fees Session - 2021-2022

<b>1</b>	<b>University Annual Fee (Per Student)</b>		
	A) Annual Fee	<b>125/-</b>	
	B) Student Welfare Fund	<b>5/-</b>	
	C) Student Medical Helpfulness Fund	<b>5/-</b>	
	D) Student Helpfulness Fund	<b>5/-</b>	
	E) Student Sport & Cultural Fee		
	F) Student Union Fee		
	G) Medical Checkup Form	<b>5/-</b>	
	H) Ashwamegh etc. Fee	<b>30/-</b>	
	I) E- Facility Fee	<b>50/-</b>	
	J) Disaster Management Fee	<b>10/-</b>	
	K) Enrollment Fee ( For 1st Year )	<b>125/-</b>	
	L) Enrollment Form Fee	<b>25/-</b>	
	M) NSS Svayamnirvahak Ekak Yojana	<b>10/-</b>	

Students Assessment will be carried out as per the credit grade semester system

**B. S. W. Semester - I**  
**Qualification H.S.S.C./C.S.W. Passed**  
**CBCS**

Sr. No.	Subject/Paper	No. of Papers	Maximum Marks	Minimum Passing Marks
	<b>Language :</b>			
1)	English (Compulsory)	One	100	40
2)	i. Marathi ii. Hindi iii. Supplementary English (Compulsory any One)	One	100	40
<b>BASIC COURSES</b>				
3)	General Psychology	One	100	40
4)	Introduction to Professional Social Work	One	100	40
5)	Social Work Profession Working With Individuals	One	100	40
6)	Social Work Practicum		100	50
		<b>Total</b>	<b>600</b>	<b>250</b>

**Note :** Components included in Social Work Practicum.

- 1) Orientation    2) Skill Laboratory  
 3) Concurrent Practice Learning    4) Agency Visits    5) Viva-Voce

## B. S. W. Semester-II CBCS

Sr No.	Subject/Paper	No. of Papers	Maximum Marks	Minimum Passing Marks
	<b>Language</b>			
1)	English (Compulsory)	One	100	40
2)	i. Marathi ii. Hindi iii. Supplementary English (Compulsory any One)	One	100	40
<b>BASIC COURSES</b>				
3)	Social Psychology for Social Worker	One	100	40
4)	Social Work Professional Historical Concepts & Ideology	One	100	40
5)	Social Work Profession Working With Groups	One	100	40
6)	Social Work Practicum		100	50
		<b>Total</b>	<b>600</b>	<b>250</b>

**Note :** Components included in Social Work Practicum.

- 1) Orientation    2) Seminar
- 3) Concurrent Practice Learning    4) Skill Lab Activity or Formal and Informal Survey
- 5) Viva-Voce



**B. S. W. Semester - III  
CBCS**

Paper	Subject	No. of Papers	Maximum Marks	Minium Passing Marks
	Language			
I	English (Compulsory)	One	100	40
II	i. Marathi ii. Hindi iii. Supplementary English (Compulsory any One)	One	100	40
<b>Basic Courses</b>				
III	Psychology : Human Growth and Development	One	100	40
IV	General Sociology Concept	One	100	40
V	Working with Communities	One	100	40
VI	Social Work Practicum	One	100	50
VII	Democracy and Good Governance	<b>One</b>	Grade	
	<b>Total</b>		<b>600</b>	<b>250</b>

**Note :** Components included in Social Work Practicum

- 1) Orientation
- 2) Workshop Organised by Students group on various issues of communities
- 3) Workshop on PRA (Participatory Rural Appraisal Techniques)
- 4) Concurrent Practice Learning related to Community Organized Methods
- 5) Viva-Voce

## B. S. W. Semester - IV

Paper	Subject	No. of Papers	Maximum Marks	Minium Passing Marks
	Language			
I	English (Compulsory)	One	100	40
II	i. Marathi ii. Hindi iii. Supplementary English (Compulsory any One)	One	100	40
<b>Basic Courses</b>				
III	Psychology of Ageing and Development	One	100	40
IV	Management of Welfare Services	One	100	40
V	Social Work Research	One	100	40
VI	Social Work Practicum	One	100	50
VII	Environmental Studies ( Audit Course )	One	Grade	
	<b>Total</b>	<b>Seven</b>	<b>600</b>	<b>250</b>

**Note :** Components included in Social Work Practicum

- 1) Orientation
- 2) Visit to Social agencies collect the Information & Presentation
- 3) Rural Camp
- 4) Concurrent Practice Learning related to Social Work Administration & Co-Social Action around the Community
- 5) Viva-Voce

## B. S. W. Semester - V

Paper	Subject	No. of Papers	Maximum Marks	Minium Passing Marks
	Language			
I	English ( Communicative )	One	100	40
II	i. Marathi ii. Hindi iii. Supplementary English (Compulsory any One)	One	100	40
<b>Basic Courses</b>				
	Sociology for Social Work	One	50	20
IV	Integrated Social Work Practice	One	100	40
V	Social Research & Statistics (Advanced)	One	100	40
VI	Social Work Practicum & Group Research Project	One	100	50
VII	<b>Elective Domain</b> i. Counseling : Theory and Practice (Part-1) ii. Disaster Management (Part-1) (Compulsory any one)	One	50	20
<b>Total</b>		<b>Seven</b>	<b>600</b>	<b>250</b>

**Note :** Components included in Social Work Practicum

1) Orientation 2) Skill lab on preparation of project proposal. 3) P.P.T on Social work practicum 4) Concurrent Practice Learning by integrated Approach 5) Group Research Project 6) Viva-Voce

## B. S. W. Semester - VI

Paper	Subject	No. of Papers	Maximum Marks	Minium Passing Marks
	Language			
I	English ( Communicative )	One	100	40
I	i. Marathi ii. Hindi iii. Supplementary English (Compulsory any One)	One	100	40
<b>Basic Courses</b>				
III	Economics : Concept for Social Work	One	50	20
IV	Personal and Professional Growth and Communication	One	100	40
V	An Introduction to Some Areas of Social Work	One	100	40
VI	Social Work Practicum & Group Research Project	One	100	50
VII	<b>Elective Domain</b> I. Counseling : Theory and Practice (Part-2) ii. Disaster Management (Part-2) (Compulsory any one)	One	50	20
<b>Total</b>		<b>Seven</b>	<b>600</b>	<b>250</b>

**Note** \* Components included in Social Work Practicum

- 1) Orientation & Skill Lab
- 2) Exposure Visit
- 3) Concurrent Practice Learning with application of Integrated Social Work Methods
- 4) Group Research Project
- 5) External Viva-Voce



Students Assessment will be carried out as per the credit grade semester system

**M. S. W. Semester - I**  
**Qualifying Education-BSW or Any Graduate**

Sr. No.	Subject/Paper	No. of Papers	Maximum Marks	Minimum Passing Marks
	<b>BASIC COURSE</b>			
1)	Sociology For Social work	One	100	50
2)	Psychology Human Growth and Development	One	100	50
3)	Social Work Profession: History and Ideologies for Social Change	One	100	50
4)	Social Work Profession : Working with Individuals		100	50
5)	Social Work Research .Fundamentals	One	100	50
6)	Social Work Practicum	One	100	50
	<b>Total</b>		<b>600</b>	<b>300</b>

**Note** Components included in Social Work Practicum

- |                                 |                     |
|---------------------------------|---------------------|
| 1) Orientation                  | 2) Skill Laboratory |
| 3) Concurrent Practice Learning | 4) Agency Visit     |
| 5) Viva-Voce                    |                     |

## M. S. W. Semester-II

Sr. No.	Subject/Paper	No. of Papers	Maximum Marks	Minimum Passing Marks
	<b>BASIC COURSES.</b>			
1)	Psychology For Social work	One	100	50
2)	Social Work Profession : Contemporary Ideologies Areas and Ethics	One	100	50
3)	Social Work Profession : Working with Groups	One	100	50
4)	Community Organization and Social Action	One	100	50
5)	Social Work Research : Advanced	One	100	50
6)	Social Work Practicum	One	100	50
	<b>Total</b>		<b>600</b>	<b>300</b>

**Note :** Components included in Social Work Practicum.

- |                                 |               |
|---------------------------------|---------------|
| 1) Orientation                  | 2) Seminar    |
| 3) Concurrent Practice Learning | 4) Rural Camp |
| 5) Viva-Voce                    |               |

### M. S. W. Semester-III

Sr No.	Subject/Paper	No. of Papers	Maximum Marks	Minimum Passing Marks
01	Integrated Social Work Practice & Social Administration	One	100	50
02	Specialisation (FCW-1HRM-1MPSW-1RTUCD-1)	One	100	50
	Specialisation (FCW-2HRM-2(O.L.W.) MPSW-2RTUCD-2)	One	100	50
03	<b>Elective Course</b> (Any one out of four) NGO Management (I) Social Work with Dalit (I) Social Work with Adolescent and Youth (I) Human Rights and Social Justice (I)	One	100	50
04	<b>Social Work Practicum</b>	One	100	50
05	Research Project Total	One	100	50
		<b>Total</b>	<b>600</b>	<b>300</b>

**Note :** Components included in Social Work Practicum.

- 1) Orientation
- 2) Visit (Local)
- 3) Structured experience laboratory
- 4) Concurrent Practice Learning
- 5) Dissertation
- 6) Viva-Vove

### M. S. W. Semester-IV

Sr No.	Subject/Paper	No. of Papers	Maximum Marks	Minimum Passing Marks
01	Social Legislation Planning & Development	One	100	50
02	Specialisation (FCW-3HRM-3MPSW-3RTUCD-3)	One	100	50
	Specialisation (FCW-4, HRM-4, MPSW-4, RTUCD-3)	One	100	50
03	<b>Elective Course</b> (Any one out of four) NGO Management (II) Social Work with Dalit ( I ) Social Work with Adolescent and Youth (II) Human Rights and Social Justice (II)	One	100	50
04	<b>Social Work Practicum</b>	One	100	50
05	Research Project Total	One	100	50
		<b>Total</b>	<b>600</b>	<b>300</b>

**Note** Components included in social work Practicum.

1) Orientation 2) Exposure Visit 3) Structured experience laboratory 4) Concurrent Practice learning 5) Dissertation 5) External Viva-Voce 6) Block Placement (21 Days)



## ✧ Job Opportunity ✧

- 1) **Zilha Parishad**  
**Panchayat Samitee**  
**Gram Panchayat** } Extension Officer Block Development Officer,  
Gramsevak, Social Welfare Officer, Project  
Co-Ordinator and Subject Expert.
- 2) **Social Welfare Department and Various Department** : Deaf and  
Dumb School, Tribal Ashram School, Social Work College, Hostel  
Superintendent.
- 3) **Integrated Tribal Development Project** : Project Officer and  
Social Worker in the Office.
- 4) **Integrated Child Development Programme** : Project Officer , Assistant  
Project Officer, Community Organizer, Social Worker, Anganwadi  
Workers, Supervisor.
- 5) Govt. Hospital and Urban Health Zone, Private Hospital, Mental Hospital  
Social Worker, Counselling and Guidance Co- ordinator
- 6) Zilla parishad, Muncipal Council and Private School
- 7) Labour Welfare Field-  
In various Public Sector & Private Sector - Labour Officer, Labour Welfare  
Officer, Labour Inforcement Officer.

## **SIGNED MOU'S WITH THE FOLLOWING DISTINGUISHED AGENCIES**

- 1) Amhi Amchya Arogya Sathi, Kurkheda Dist. Gadchiroli
- 2) Ballarpur Industries limited (Corporate Social Responsibility),
- 3) ECO-Pro, Chandrapur
- 4) General Hospital, Chandrapur
- 5) Indian Association of Human Behavior, Pune
- 6) Janhitay Mandal (Health Education & Extension Project), Chandrapur
- 7) Mahila Arthik Vikas Mahamandal, Chandrapur
- 8) Mendhalekha Project (Only Village in the country received t/p under forest act 2005.) District Gadchiroli
- 9) Municipale corporation Chandrapur
- 10) PRAKRUTI, Chandrapur
- 11) Shramik Elgar Mul Dist, Chandrapur
- 12) Vikas kendra, Chandrapur
- 13) Zilha Parishad, Chandrapur
- 14) Paryavaran Mitra, Wirur
- 15) Sankalp Yuva Prerit Bahuudeshiya Sanshtha, Chandrapur
- 16) PEE VEE Textiles, Jam, Tah-Samudrapur, Dist. Wardha.
- 17) Central Board For Workers Education, Nagpur
- 18) SAARD
- 19) Vikas Kendra, Gadchiroli
- 20) Gram Panchayat Gorja
- 21) Zillha Krida Sankul, Chandrapur
- 22) S. P College, Chandrapur
- 23) S.P Law College, Chandrapur.
- 24) Awanta Foundation, Pune
- 25) Society for Change, Chandrapur
- 26) Yashwantrao Chauhan Academy of Development Administration (YASHDA), Pune
- 27) Jansewa Gramin Vikas and Shikshan Pratishthan, Yeotmal.
- 28) Snehalaya, Ahamadnagar
- 29) CAP Foundation, Orisa.
- 30) Khwaja Garib Nawaj Alpasankhyank Bahuuddesiya Vikas Sanstha, Ballarpur

## **Placement Agencies for Social Work Practicum**

- 1) Anthoropological Survey of India
- 2) Bilt, Ballarpur
- 3) Central Regional Center, Nagpur
- 4) Child Line, Chandrapur
- 5) Chirst Hospital, Chandrapur
- 6) District General Hospital, Chandrapur
- 7) Deaf & Dumb School, Chandrapur
- 8) District Rural Development Agency Chandrapur
- 9) District Women & Chinld Welfare Office Chandrapur
- 10) District Women and Child Development Office Chandrapur
- 11) Divisional Controler, MSRTC, Chandrapur
- 12) Dr Deshpande's Hospital, Chandrapur
- 13) ElgarPratishthan, Chitegav, Mul
- 14) Forest Training Centre, Chandrapur
- 15) General Manager, WCL, Chandrapur
- 16) General Manager, WCL, Durgapur
- 17) General Manager, WCL, Durgapur
- 18) Govt. (Boys) Observation Home, Chandrapur
- 19) Grampanchayat, Lohara
- 20) Grampanchayat, Walni Borda
- 21) Grampanchayat, Chichpalli
- 22) Grampanchayat, Ghantachoki, Borda
- 23) Grampanchayat, Kosara
- 24) Grampanchayat, Nagala
- 25) Grampanchayat, Sidur
- 26) H R. Dept. Ultratech Cement Limited, Korpana
- 27) I T Migrant Project, Chandrapur
- 28) Indian Instituetee of Youth Welfare Gadchiroli
- 29) Integrated Tribal Development Project
- 30) Janhitay Mandal, Chandrapur

- 31) Jheep, Chandrapur
- 32) Labour Welfare Office
- 33) Lalit Kala Bhavan Chandrapur
- 34) Lokbriradari Project, Hemalkasa
- 35) Maharashtra State Co-operative Tribal Development, Chandrapur
- 36) Maharogi Sewa Samiti, Warora
- 37) Maharogi Sewa Samiti, Warora
- 38) Manikghadh Cement, Gadchandur
- 39) Mendha Lekha Grampanchayt, Gadchiroli
- 40) Mount Carmal Mently Challenge Students School, Chandrapur
- 41) Municipal Corporation
- 42) N.R.H M Chandrapur
- 43) Nagari Arogya Kendra
- 44) Nobel Chandrapur
- 45) Organic Pvt. Ltd MIDC, Chandrapur
- 46) PV Chakravarti, DGM (P&A), Chandrapur Fero Alloy Plant
- 47) Police Takrar Nivaran Kendra Chandrapur
- 48) President MIDC Industry Association, MIDC P/8, Chandrapur
- 49) Sanjivani Blood Bank
- 50) Sarswati Shikshan Mandal, Chandrapur
- 51) Sarswati Shikshan Mandal, Chandrapur
- 52) Search Shodhagram, Gadchiroli
- 53) Steel Authority India Ltd. Fero Allowy Plant Chandrapur
- 54) STRI Adhar Kendra, Chandrapur
- 55) Suvarna Jayanti Urban Employment Scheme
- 56) T.B. Hospital, Chandrapur
- 57) Vikas Kendra, Chandrapur
- 58) Vikas Kendra, Gadchiroli
- 59) WCL, Mahakali Colory, Chandrapur
- 60) Western Coal Field Ltd. Nagpur



### **BLOCK PLACEMENT AGENCIES**

- 1) Amhi Amchya Arogyasathi, Kurkheda, Gadchiroli
- 2) Ambuja Foundation Korana & Uparwahi
- 3) Apeksha Homo Society, Mozari
- 4) Art Center, Ballarsha
- 5) Awanta Foundation, Pune
- 6) Wardha Power Plant, Warora
- 7) Yashada, Pune
- 8) Yuvak Kranti Dal, Pune
- 9) C.S. R. BGPL Ballarpur
- 10) C.S.R. Executive BGPL Ballarpur
- 11) CAP Foundatio, Odissa
- 12) Deepak Foundation, Public Health Trainiess Institute Badoda
- 13) Dhariwal Intrastruction Pvt. Ltd., tadali
- 14) DMIMS, Sawangi Meghe
- 15) Global Aluiance Sustainble Development Mumbai
- 16) Govt. Certified School
- 17) Gramin Samsya Mukti Trust, Wani
- 18) Gramin Vikas Sewa Sanstha, nagpur
- 19) Jansewa Gramin Vikas Ani Shikshan Pratishtan, Yewatmal
- 20) MDC Shirpur, Pune
- 21) Mure Memorial Hospital Nagpur
- 22) Panchayat Samiti, Ballarpur
- 23) Paryawaran Shikshan Kendra, Pune
- 24) Project Cordinator, Mahila Aartaik Vikas Mahamandal
- 25) Society For Change, Chandrapur
- 26) The Manager, Bilt Ballarpur
- 27) Vikas Kendra, Gadchiroli

## PUBLIC HOLIDAYS - 2021

The Government of Maharashtra hereby declares the following days as Public Holidays in the State of Maharashtra during the calendar year 2021

Sr.No.	HOLIDAY	DATE	DAY
1	Republic Day	26th January 2021	Tuesday
2	Chhatrapati Shivaji Maharaj Jayanti	19th February 2021	Friday
3	Mahashivratri	11th March 2021	Thursday
4	Holi (Second Day)	29th March 2021	Monday
5	Good Friday	2nd April 2021	Friday
6	Gudhi Padwa	13th April 2021	Tuesday
7	Dr. Babasaheb Ambedkar Jayanti	14th April 2021	Wednesday
8	Ram Navami	21st April 2021	Wednesday
9	Ramzan-Id (Id-UI-Fitr) (Shawal-1)	13th May 2021	Thursday
10	Buddha Pournima	26th May 2021	Wednesday
11	Bakri Id (Id-Uz-Zuha)	21st July 2021	Wednesday
12	Parsi New Year (Shahenshahi)	16th August 2021	Monday
13	Moharum	19th August 2021	Thursday
14	Ganesh Chaturthi	10th September 2021	Friday
15	Dasara	15th October 2021	Friday
16	Id-E-Milad	19th October 2021	Tuesday
17	Diwali Amavasaya (Laxmi Pujan)	4th November 2021	Thursday
18	Diwali (Bali Pratipada)	5th November 2021	Friday
19	Guru Nanak Jayanti	19th November 2021	Friday

**A) The following Holiday's falls on Saturday and Sunday**

Sr.No.	HOLIDAY	DATE	DAY
1	Mahavir Jayanti	25th April 2021	Sunday
2	Maharashtra Din	1st May 2021	Saturday
3	Independence Day	15th August 2021	Sunday
4	Mahatma Gandhi Jayanti	2nd October 2021	Saturday
5	Christmas	25th December 2021	Saturday

B) The Hon'ble District collector of Chandrapur hereby declares the following day as Local Holiday's in the Chandrapur District.

Sr.No.	HOLIDAY	DATE	DAY
1	Pola (2 <sup>nd</sup> day)	7th September 2021	Tuesday
2	Pitrumoksha Amavasya	6th October 2021	Wednesday
3	Dhantrayodashi	2nd November 2021	Tuesday

**S.R.M. COLLEGE OF SOCIAL WORK  
PADOLI, CHANDRAPUR**

**Dr. Sunil M. Sakure - Principal**  
M.S.W., M.Phil, PhD.

**TEACHING FACULTY**


	<p><b>Shri. Narendra S. Tikle</b> Vice Principal Associate Professor M.A. (Marathi), Mphil, <b>Subject : Marathi</b> <b>Experience : 26 Years</b></p>		<p><b>Dr. Jayshri T. Kapse</b> Associate Professor M.S.W. (Medi. &amp; Psych.), Ph.D <b>Subject : Social Work</b> <b>Experience : 30 Years</b></p>
	<p><b>Dr. Mamata S. Thakurwar</b> Associate Professor M.S.W. (C.D.), (Medi. &amp; Psych.), B.Ed., Mphil, Ph.D. <b>Subject : Social Work</b> <b>Experience : 29 Years</b></p>		<p><b>Dr. Sanjiv K. Nimbalkar</b> Associate Professor M.S.W. (L.W.P.M.), M. Phil, SET., Ph.D. <b>Subject : Social Work</b> <b>Experience : 24 Years</b></p>
	<p><b>Dr. Kalpana M. Kawade</b> Associate Professor M.S.W. (C.D.), M. Phil, SET., Ph.D. <b>Subject : Social Work</b> <b>Experience : 24 Years</b></p>		<p><b>Dr. Pragati D. Narkhedkar</b> Associate Professor M.S.W. (C.D.) (FCW.), M. Phil, Ph.D. <b>Subject : Social Work</b> <b>Experience : 23 Years</b></p>
	<p><b>Shri. Nitin R. Ramteke</b> Associate Professor M.S.W. (C.D.), NET. <b>Subject : Social Work</b> <b>Experience : 22 Years</b></p>		<p><b>Dr. Purushottam M. Borkar</b> Associate Professor M. A. (Psychology), M.I.R.P.M., Ph.D. <b>Subject : Psychology</b> <b>Experience : 22 Years</b></p>
	<p><b>Dr. Devendra B. Borkute</b> Assistant Professor M.S.W. (Medi. &amp; Psych.), M.Phil., Ph.D. <b>Subject : Social Work</b> <b>Experience : 22 Years</b></p>		<p><b>Shri. Vishvanath H. Rathod</b> Assistant Professor M.S.W. (C.D.), M.Phil. <b>Subject : Social Work</b> <b>Experience : 22 Years</b></p>
	<p><b>Dr. Nilesh S. Dhekare</b> Assistant Professor M. A. (English), B.Ed., Ph.D. <b>Subject : English</b> <b>Experience : 22 Years</b></p>		<p><b>Shri. Santosh S. Ade</b> Assistant Professor M.S.W. (L.W.P.M.), M. Phil. <b>Subject : Social Work</b> <b>Experience : 22 Years</b></p>
	<p><b>Shri. Kirankumar J. Manure</b> Assistant Professor M.S.W. (C.D.), NET <b>Subject : Social Work</b> <b>Experience : 12 Years</b></p>		<p><b>Dr. Subhash R. Girde</b> Assistant Professor M.S.W. (C.D.), M.Phil., Ph.D. <b>Subject : Social Work</b> <b>Experience : 10 Years</b></p>



**S.R.M. COLLEGE OF SOCIAL WORK  
PADOLI, CHANDRAPUR**

**Dr. Sunil M. Sakure - Principal**  
M.S.W., M.Phil, PhD.

**Teaching Staff**

	<b>Name</b>	<b>Designation</b>
	<b>Shri. Siddhartha Wakude</b>	<b>Librarian</b>
	M.Com.,M.Lib.,NET,SET	
	Subject : -----	
Experience : 13 Years		

**Non-Teaching Staff**

**Library Staff**

**Office Staff**

S.N.	Name	Designation	S.N.	Name	Designation
1)	Shri. Balkrushna Lambat	Asstt. Librarian	1)	Shri Hiralal Waghmare	Superintendent
2)	Shri. Rameshwar Shegokar	Asstt. Librarian	2)	Shri Krishnaprakash Kuralla	Accountant
3)	Shri. Sunil Lakhadive	Library Clerk	3)	Ku. Vandana Sidam	Clerk
4)	Shri.Yogesh Bhagat	Library Assistant	4)	Shri Sukhdeo Choudhari	Clerk
5)	Shri. Amit Amrutkar	Library Assistant			

**Supporting Staff**

S.N.	Name	Designation	S.N.	Name	Designation
1)	Shri. Ramesh Thakare	Watchman	1)	Shri. Ghanshyam Borkar	Peon
2)	Shri Khimdeo Hingane	Watchman	2)	Shri. Omprakash Sathawane	Gardner
3)	Shri Dinkar Bankar	Sweeper	3)	Shri. Ritesh Khote	Sweeper
4)	Ku. Geeta Telang	Peon	4)	Shri. Rashtrapal Teltumbade	Watchman

**SARVODAYA SHIKSHAN MANDAL  
EXECUTIVE BODY**

- 1) Smt. Sudhatai S. Potdukhe : President
- 2) Sri. Arvind Sawkar Poreddiwar : Working President
- 3) Sri. P. H. Dhankar : Vice President
- 4) Sri. Manoharrao R. Tarkunde, Nagpur : Treasurer
- 5) Sri. Prashant S. Potdukhe : Secretary
- 6) Dr. Kirtivardhan Dixit : Joint Secretary
- 7) Shri. Rakesh S. Patel : Member
- 8) Shri. Sudharshan Nimkar : Member
- 9) Smt. Sagunatai P. Talandi, Sironcha : Member
- 10) Shri. S. K. Ramjan A. A. : Member

**S.R.M. COLLEGE OF SOCIAL WORK  
PADOLI, CHANDRAPUR  
College Development Committee**

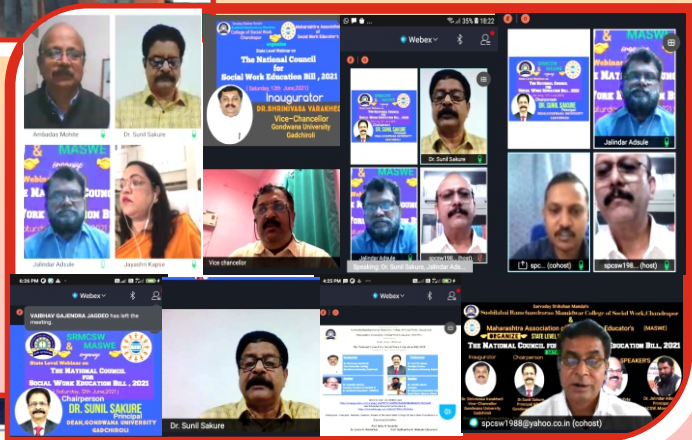
- 1) Smt. Sudhatai S. Potdukhe : President
- 2) Principal Dr. Sunil M. Sakure : Member Secretary
- 3) Shri. Prashant S. Potdukhe : Member
- 4) Prof. Narendra S. Tikle : Member
- 5) Prof. Dr. Sanjiv K. Nimbalkar : Co-ordinator IQAC
- 6) Prof. Nitin R. Ramteke : Teachers' Representative
- 7) Prof. Dr. Purushottam M. Borkar : Teachers' Representative
- 8) Prof. Dr. Jayashri T. Kapse : Teachers' Representative
- 9) Ku. Vandana K. Sidam : Non-Teaching's Representative
- 10) Shri. Dr. Vijay S. Ainchwar : Member, Field of Education
- 11) Vacant : Member, Field of Industry
- 12) Shri Mohan Hirabai Hiralal : Member, Field of Research
- 13) Ku. Sonali Gawargur : Member, Field of Social Service
- 14) President : College Student Council
- 15) Secretary : College Student Council

Former Vice Chancellor of Gondwana University Gadchiroli Dr. Kirtiwardhan Dixit addressing on account of College level Graduation Certificate distribution Program. Also present are Principal Dr. S.M. Sakure, Vice Principal Prof. N.S. Tikle, Chairmen of Board of Studies Dr. Sanjiv Nimbalkar and Dr. Nilesh Dhekre



Office bearers of Red Ribbon Club handing over the Sanitizer Stand, bottles to the college in the Post Covid scenario. Also seen are Shri. Prashant Potdukhe, Secretary, Sarvodaya Shikshan Mandal, Principal Dr. S. M. Sakure along with Teaching and Non-teaching staff.

Hon'ble Vice Chancellor G.U. Gadchiroli, Prof. Dr. Shrinivasa Warkhedi are inaugurated State Level Webinar on "The NCSWE Bill, 2021" being organized by MASWE & the college. Chairperson Dr. S.M. Sakure & Dr. Ambadas Mohite, Dr. Jalandar Adsule are speakers of Webinar. Also seen are Dr. J.T. Kapse, Prof. N. R. Ramteke, Prof. S.N. Wakude, Dr. S. K. Nimbalkar



Principal Dr. Sunil Sakure addressing the gathering on account of farewell ceremony of retd. Prof. Arun Khedkar. Also seen are Dr. Kirtivardhan Dixit, Joint Secretary, Sarvodya Shikshan Mandal, Vice-Principal Prof. N. S. Tikle and Mrs. Kirti A. Khedkar





**SUSHILABAI RAMCHANDRARAO MAMIDWAR  
COLLEGE OF SOCIAL WORK, CHANDRAPUR**

**BOYS HOSTEL**

**GIRLS HOSTEL**

**GONDWANA UNIVERSITY, GADCHIROLI  
MERIT STUDENTS**

**M.S.W.**

**SESSION 2018-2019**



**Ku. Madhuri U. Mistri  
2<sup>nd</sup> Rank**



**Ku. Chetali B. There  
5<sup>th</sup> Rank**

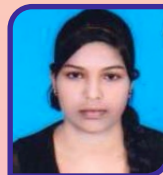
**SESSION 2019-2020**



**Manoj C. Kowe  
2<sup>nd</sup> Rank**

**B.S.W.**

**SESSION 2018-2019**

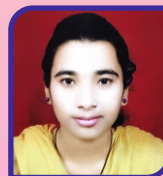


**Ku. Pranita Wawre  
3<sup>rd</sup> Rank**



**Shrikrushna U. Shende  
5<sup>th</sup> Rank**

**SESSION 2019-2020**



**Ku. Sangita Burudkar  
2<sup>nd</sup> Rank**



**Ku. Namrata Kukudkar  
3<sup>rd</sup> Rank**





Sarvodaya Shikshan Mandal's  
**SUSHILABAI RAMCHANDRARAO MAMIDWAR**  
**COLLEGE OF SOCIAL WORK, CHANDRAPUR**

No.

**Admission Form 2021-2022**

To be Filled by the Student's	For Office use only		
Admission in Class : .....	Admission No. : .....	<div style="border: 1px solid black; padding: 10px; width: fit-content; margin: auto;">                     Stick your Passport Size Photo Here                 </div>	
Semester : .....	Class : .....		
Selected Subject : .....	Section : .....		
1.	Admission Date : .....		
2.	Percentage of qualifying Exam. %		
3.	Submitted Certificates 1.....		
4.	2.....		
5.	3.....		
6.	Fees Paid Rs.	Receipt No.	
7.	Signature Admission committee	Signature Principal	Signature Clerk

**To be Filled by the Students**

- 1) Full Name (Surname First).....
- 2) Date of Birth (In Figure).....(In Words).....
- 3) Sex.....Age.....Blood Group.....Religion.....Caste.....
- 4) Category of Students (SC/ST/NT/VJNT/SBC/OBC/OPEN).....
- 5) Aadhar Card No.....
- 6) Voter Card No.....
- 7) (a) Father's Name.....(b) Mother's Name.....  
 Permanent Address.....  
 .....  
 Local Address : .....
- Parent's Occupation .....Yearly Income.....
- 8) Name & Address of Conveyer.....  
 .....Tel. / Mob. No.....Self.....
- 9) Admission in Hostel - Yes / No. Parent's Mobile No. : .....
- 10) Married/Unmarried .....9) Medium of Instruction Mar./ Eng./Hin.
- 11) Information of last Passed Exam : .....Year March/ Oct. : .....
- 12) Admission According to A.T.K.T. : .....Year March/ Oct.:.....  
 Subject Exempted : 1) : .....2).....3):.....  
 4) : .....5).....
- 14) Your T.C. In College. Yes / No. If Yes Class : .....Year.....

15) College fees concession E.B.C. / P.T.C. / Caste Declaration / Girls concession / Full fees / Handicapped / Any other

16) Do the Student engage in Job : Yes / No.

17) Enrolment of Gondwana University :.....

18) Otherthan Gondwana University :.....

19) Interest in Games :.....

20) Applicant must fill the following information. :.....

Name of Exam.	University Board	Roll No.	Enrolment No.	Subject	Total Marks	Class	Percentage	How Many (Attempt)

21) (a) Give Reasons for your choice to seek Admission in Social-Work (Attach a separate sheet )

(b) Specialization Preference 1)..... 2) .....

22) Give the Names and Address of the two well-known person who know you well.

1)..... 2) .....

23) Where did you gather the information about social work curriculum.

1)..... 2) .....

### विद्यार्थ्यांचे प्रतिकापत्र

प्राचार्य महोदय,

मी (पुर्ण नाव) .....

- प्रतिज्ञापत्र लिहून देतो / देते की, प्रवेश अर्जात भरलेली माहिती संपूर्ण सत्य आहे. मी माहितीपत्रक काळजीपूर्वक वाचले आहे आणि त्यातील मजकूर मला समजला आहे.
- महाविद्यालयात वार्षिक सनेहसंमेलन व विद्यार्थी संघटनेचे कोणतेही कार्यक्रम होणार नाही याची मला माहिती आहे. त्यासाठी व्यक्तिशः किंवा सामूहिकरीत्या कोणतीही मागणी करणार नाही.
- महाविद्यालयात सद्यस्थितीत उपलब्ध असलेल्या सोयी सवलती मला मान्य आहेत त्याव्यतिरिक्त इतर कोणतीही नविन मागणी करणार नाही.
- वर्गात व महाविद्यालयाचे परिसरात मी कोणतेही मादक पदार्थ, गुटका, पान, तंबाखु, धुम्रपान इत्यादींचे सेवन करणार नाही. उलट महाविद्यालयातील स्वच्छता व मालमत्ता याची काळजी घेईन.
- मी माझे ओळखपत्र (IDENTITY CARD) प्रवेश घेतल्यापासून पंधरा दिवसांचे आत तयार करून घेईन व ते जवळ बाळगीन.
- महाविद्यालयाच्या नियमांचा मी भंग केल्यास महाविद्यालयाने केलेली कारवाई मला मान्य राहिल.
- महाविद्यालयाची चाचणी परिक्षा न दिल्यास महाविद्यालयाने आकारलेला दंड मला मान्य राहिल.
- महाविद्यालयांत वर्गप्रतीनिधी किंवा विद्यापीठ प्रतीनिधी म्हणून निवडून आल्यानंतर बाहेरील संघटना / राजकिय संघटना यांचे सहकार्य घेऊन मी महाविद्यालयांत कोणत्याही प्रकारे संप घडवून आणणार नाही. महाविद्यालयातील समस्यासंबंधी प्राचार्यांशी मी प्रतीनिधी म्हणून चर्चाकरून समस्या सोडविन व प्राचार्यांनी दिलेला निर्णय मान्य राहिल.
- महाविद्यालयांत वर्ग सुरु असतांना कोणत्याही विद्यार्थ्यांस तास करण्यास मज्जाव करणार नाही व वर्गाचे बाहेर काढणार नाही.
- महाविद्यालयाच्या मालमत्तेची, सामानाची, इमारतीची कोणत्याहीप्रकारे तोडफोड करणार नाही.  
वरिल १ ते १० व महाविद्यालयाची आचारसंहिता आणि वेळोवेळी प्राचार्यांने केलेल्या सूचनांचे पालन न केल्यास व नियमांचे उल्लंघन केल्यास माझा प्रवेश रद्द करण्यास माझी परवानगी आहे यांस माझी तक्रार राहणार नाही.

चंद्रपूर / दि. ....

विद्यार्थ्यांची स्वाक्षरी

वडिलाचे / पालकाचे प्रतिज्ञापत्र

प्राचार्य महोदय,

मी घोषित करतो की अर्जदार माझा मुलगा / मुलगी / पाल्य आहे व त्याने भरलेली माहिती बरोबर आहे. मी हमी देतो की तो / ती महाविद्यालयाच्या सर्व नियमांचे पालन करेल तो/ती अशैक्षणिक आंदोलने व बेशिस्त पासून काळजीपूर्वक दूर राहिल. गैरवर्तनाबद्दल आपला निर्णय मला मान्य राहिल.

चंद्रपूर / दि. ....

वडिलाची / पालकाची स्वाक्षरी





Form No.

**5. Selected/Opted Papers Section** [Write paper codes only, in the boxes]

1.	3.	5.	7.	9.
2.	4.	6.	8.	10.

**6. Attached Documents and Certificates Section**

Sr. No.	Name of Document/Certificate	Original/Attested True Copy	Attached (Yes/No)
1	Passing Certificate of Std 10th	Attested True Copy	
2	Passing Certificate of Std 12th / Statement of Marks of Std 12th	Attested True Copy	
3	Leaving Certificate	Original	
4	Certificate of Caste with Category	Attested True Copy	
5	Non Creamy Layer Certificate	Attested True Copy	
6	Affidavit for changed name / Marriage Certificate / Govt. Gazette		
7	Domicile Certificate	Attested True Copy	
8	Certificate for Physically Challenged	Attested True Copy	
9			
10			
11			
12			

**7 Guardian Information Section**

<b>Guardian's Name</b>	
<b>Occupation of the Guardian :</b> Service / Business / Profession / Farmer / Laborer / Retired	<b>Annual Income of the Guardian (Rs.)</b> (last financial year)
<b>Relationship of guardian with applicant :</b>	<b>Phone No.</b>

**8. Other Information Section**

Mother Tongue	Employment Status Employed / Unemployed	Do you wish to join NCC / NSS Yes / No.
Would you Like to apply for Hostel Yes / No		
Hobbies, Proficiency and Other Interests		
Games and Sports participation Level (e.g. college/state/national/international etc.).		
Personal Identification Marks	1.	2.

**9. Declaration by Student**

I hereby declare that, I have read the rules related to admission and the information filled in by me in this form is accurate and true to the best of my knowledge. I will be responsible for any discrepancy, arising out of the form signed by me and I undertake that, in absence of any document the final admission will not be granted and/or admission will stand cancel.

Place \_\_\_\_\_ Signature of the student  
Date \_\_\_\_\_

**10. Declaration by Guardian**

I have permitted my son/daughter/ward to join your college. The information supplied by him/her is correct to the best of my knowledge. I have acquainted myself with the rules and fees, dues to my son/daughter/ward and to see that he/she observes.

Place \_\_\_\_\_ Signature of the Guardian  
Date \_\_\_\_\_

**11 For College/Institute Use Only**

Designation	Remarks / Particulars / Recommendations	Signature and date
Admission Clerk		
Admission Committee		
Accountant/Cashier	Cash Received : Rs. Receipt No.	
Registrar / Office Superintendent		
Principal/Director		

**SARVODAYA SHIKSHAN MANDAL'S**  
**SUSHILABAI RAMCHANDRARAO MAMIDWAR**  
**COLLEGE OF SOCIAL WORK, CHANDRAPUR**

**UNDERTAKING**

I, Mr. / Miss .....

Studying in Class..... of this College during

The session 20 - 20 assure you that, I shall not

involve in any sort of Mental and Physical Ragging of Students

in College premises or out side the premises. If, I am found in any

such activity, I shall be liable for punishment as per Anti

Ragging Act of Maharashtra Government, 1999 No. 33

I shall be completely responsible for further  
consequence.

I am willingly signing this undertaking.

Place : Chandrapur

Date : / /

Signature of Student

.....

**XEROX COPIES TO BE ATTACHED WITH ADMISSION FORM**

- |  |                   |
|--|-------------------|
| 1. Transfer Certificate                                      | 2 copies+Original |
| 2. Mark list of X / XII / Graduation                         | 2 copies          |
| 3. Eligibility Certificate (If necessary)                    | Original          |
| 4. Migration Certificate<br>(Other than Gondwana University) | Original          |
| 5. Attempt Certificate                                       | 2 copies          |
| 6. Caste Certificate<br>( For reserve category Students)     | 2 copies          |
| 7. Gap Certificate (If necessary)                            | 2 copies          |
| 8. Aadhar Card   | 2 copies          |
| 9. Passport Size Photograph                                  | 2 Photos          |

Note : Students should retain Xerox Copies of all Original Documents.